

Le logiciel CCD-Inspector

Présentation des grandes lignes

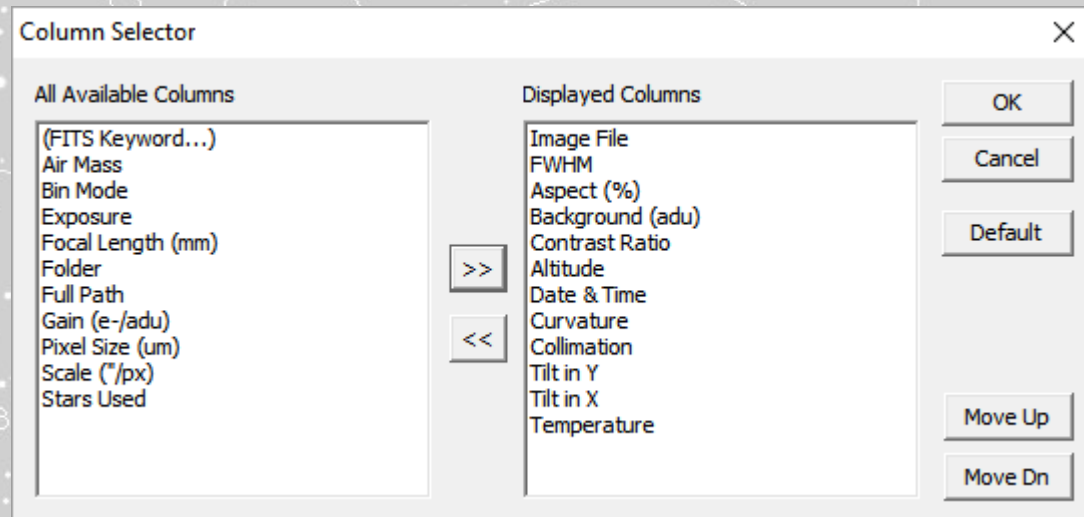
D'un logiciel de Qualification de vos images

Et de votre setup

Les principales fonctions

• Qualification de l'image (chaîne optique)

- ★ FWHM
- ★ « Rondeur » des étoiles (Aspect ratio) c'est la qualité de l'autoguidage et du setup optique
- ★ Contraste
- ★ Courbure de champ en 2D et 3D
- ★ Tilt en X et Y
- ★ Collimation
- ★ Etc...



Exemple d'une analyse des images

CCDInspector 2.5.3

File Images Analysis Real-Time Settings Help

☐ AutoOpen...

☐ Reduce...

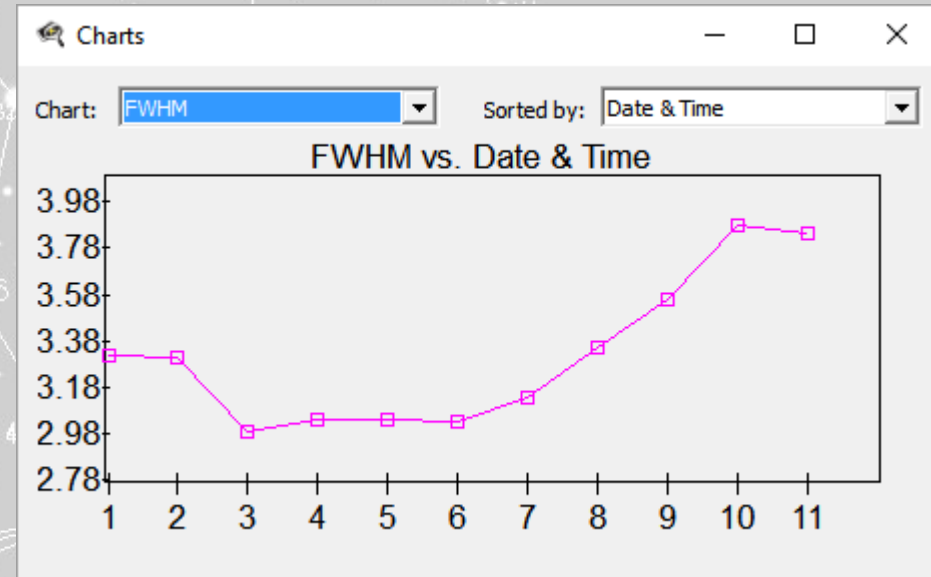
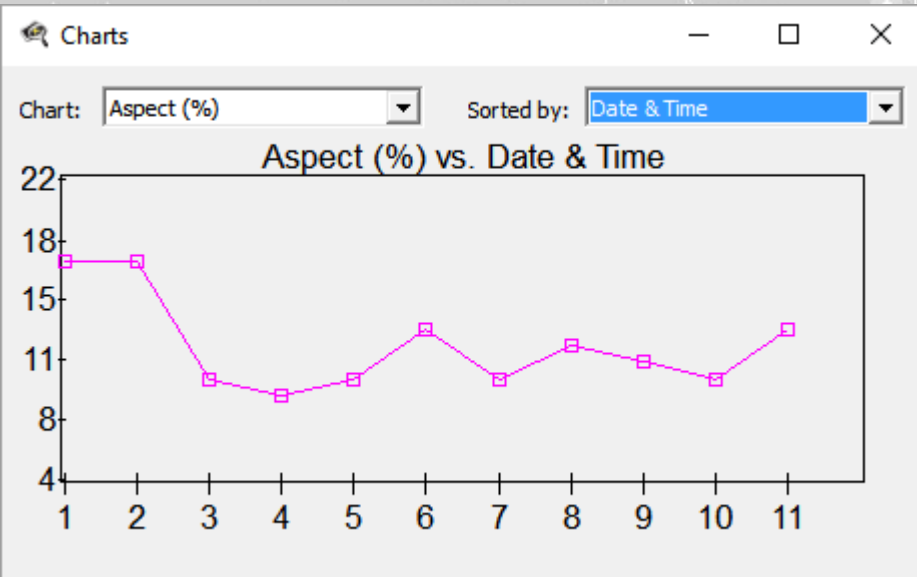
☒ In Arcsecs

☐ Limit Alert...

Selected:

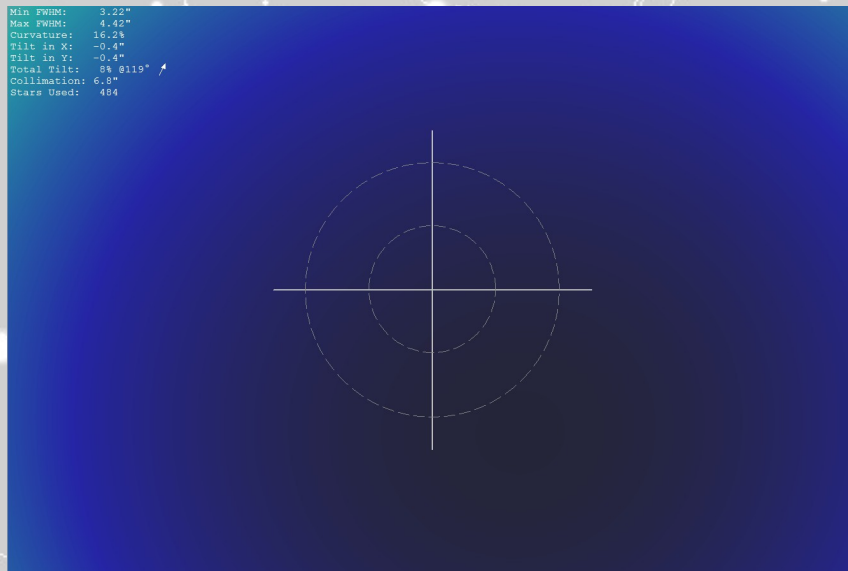
Image File	FWHM	Aspect (%)	Background (...)	Contra...	Altitude	Date & Time	Tilt in Y	Tilt in X	Tem...	Star...	S... ▲	Exposure	Curvature	Collimation	Bin Mode
NGC6960-001L...	3.32"	16	869	10.67	+7° 26' 59"	07/11/13 23:22:04	0.4"	0.6"	-10.0	2805	1.88	900.000	16.1	5.3"	1
NGC6960-002L...	3.32"	17	836	10.60	+8° 04' 59"	07/11/13 23:38:02	0.5"	0.7"	-10.0	2783	1.88	900.000	17.8	6.8"	1
NGC6960-003L...	3.31"	7	846	10.95	+3° 47' 59"	07/12/13 00:06:26	-0.4"	-0.4"	-10.0	2778	1.88	900.000	16.2	6.8"	1
NGC6960-004L...	3.01"	10	868	11.12	+6° 22' 59"	07/12/13 00:22:24	-0.4"	-0.4"	-10.0	2886	1.88	900.000	14.8	6.8"	1
NGC6960-005L...	3.08"	9	845	11.64	+9° 33' 00"	07/12/13 00:38:22	-0.3"	-0.3"	-10.0	2858	1.88	900.000	13.2	5.3"	1
NGC6960-006L...	3.06"	11	813	13.25	+3° 15' 00"	07/12/13 00:54:20	-0.2"	-0.2"	-10.0	2870	1.88	900.000	12.1	4.2"	1
NGC6960-007L...	3.05"	13	771	20.01	+4° 28' 59"	07/12/13 01:10:18	-0.1"	0.0"	-10.0	2940	1.88	900.000	10.2	1.9"	1
NGC6960-008L...	3.14"	10	773	20.58	+7° 26' 00"	07/12/13 01:26:16	-0.0"	0.1"	-10.0	2957	1.88	900.000	11.4	1.9"	1
NGC6960-009L...	3.36"	12	777	11.37	+3° 30' 00"	07/12/13 02:11:54	0.0"	0.0"	-10.0	2758	1.88	900.000	10.7	0.0"	1
NGC6960-010L...	3.57"	11	899	11.27	+4° 31' 59"	07/12/13 02:27:53	0.0"	0.1"	-10.0	2681	1.88	900.000	11.7	0.0"	1
NGC6960-011L...	3.88"	10	938	11.68	+6° 11' 00"	07/12/13 02:43:51	0.1"	0.2"	-10.0	2671	1.88	900.000	12.9	0.0"	1
NGC6960-012L...	3.85"	13	729	16.36	+6° 43' 00"	07/12/13 02:59:48	0.1"	0.2"	-10.0	2886	1.88	900.000	12.6	0.0"	1

Graphes construits sur les différentes images

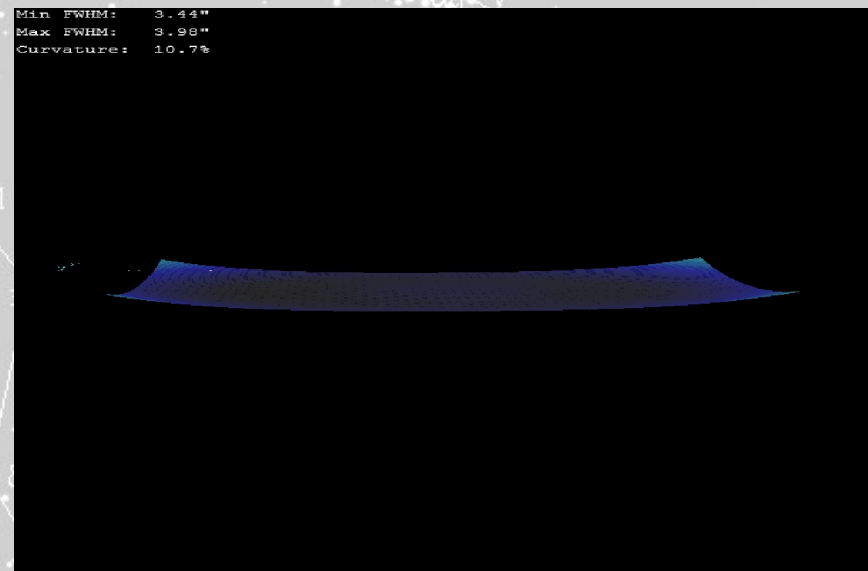


Représentation de la coubure du champ vu par le capteur

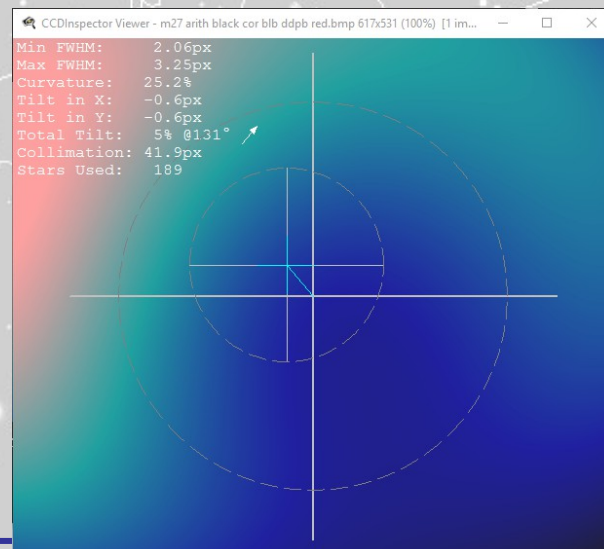
Lunette En 2d



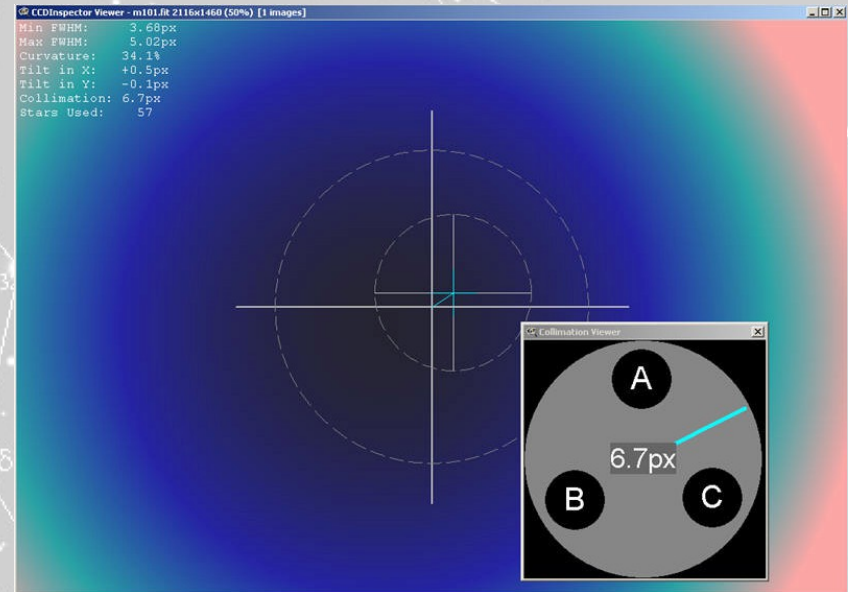
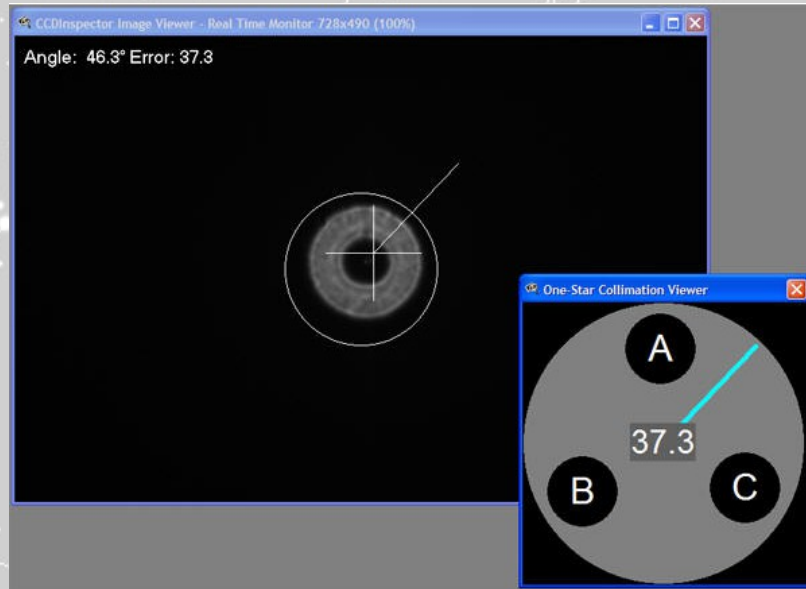
Lunette En 3D



Un C8 mal collimaté



Fonction d'aide à la collimation



Une fonction de « monitoring »

- Quand on est en prise de vues, le logiciel fait une analyse automatique des images ce qui permet de surveiller FWHM, aspect ratio, Tilt... et on peut définir des seuils permettant d'alerter si on sort de ces seuils

The screenshot shows the CCDInspector 2.5.3 software interface. On the left, a sidebar contains buttons for 'Open...', 'Remove', 'Reduce...', 'In Arcsecs', 'Measure All', 'Limit Alert..', 'View...', 'Curvature...', '3-D Plot...', 'Charts...', and 'Extrapolate...'. The 'Limit Alert..' button is highlighted with a red circle. The main window displays a table of image data with columns: Image File, FWHM, Aspect (...), Backgro..., Contr..., Altitude, Date & Time, Curvature, Exposure, Collimation, Scale ('/...), Tilt in Y, Tilt in X, and Temper... The table lists 11 images, all with an exposure of 900.000 and a temperature of -10.0. A 'Limit Alerts' dialog box is open in the center, showing a table with columns: Image Property, Min Value, and Max Value. The table lists various image properties and their corresponding minimum and maximum values.

Image File	FWHM	Aspect (...)	Backgro...	Contr...	Altitude	Date & Time	Curvature	Exposure	Collimation	Scale ('/...	Tilt in Y	Tilt in X	Temper...
<input type="checkbox"/> NGC6960-001L.fit	3.31"	17	1975	11.90	+7° 26' ...	07/11/13 23:22:04		900.000		1.88			-10.0
<input type="checkbox"/> NGC6960-00						07/11/13 23:38:02		900.000		1.88			-10.0
<input type="checkbox"/> NGC6960-00						07/12/13 00:22:24		900.000		1.88			-10.0
<input type="checkbox"/> NGC6960-00						07/12/13 00:38:22		900.000		1.88			-10.0
<input type="checkbox"/> NGC6960-00						07/12/13 00:54:20		900.000		1.88			-10.0
<input type="checkbox"/> NGC6960-00						07/12/13 01:10:18		900.000		1.88			-10.0
<input type="checkbox"/> NGC6960-00						07/12/13 01:26:16		900.000		1.88			-10.0
<input type="checkbox"/> NGC6960-00						07/12/13 02:11:54		900.000		1.88			-10.0
<input type="checkbox"/> NGC6960-01						07/12/13 02:27:53		900.000		1.88			-10.0
<input type="checkbox"/> NGC6960-01						07/12/13 02:43:51		900.000		1.88			-10.0
<input type="checkbox"/> NGC6960-01						07/12/13 02:59:48		900.000		1.88			-10.0

Image Property	Min Value	Max Value
FWHM		3.5
Aspect (%)		20.0
Background (adu)		
Contrast Ratio		
Stars Used		
Altitude		
Curvature		
Collimation		
Tilt in X		
Tilt in Y		
Exposure		
Temperature		

Les plus et les moins et le PRIX

- ++ très utile à la mise en place du setup
- +Pratique pour surveiller l'évolution en cours de nuit
- - en Anglais
- - pas gratuit !!
- Prix

CCDInspector



CCDInspector Version 2.0

Software License for new users of
CCDInspector 2.1. Includes CCDIS/P
plug-in.
\$179.95 USD



[Add to Cart](#)